

Shoreline

NEWS



Steenburg Lake Community Association Newsletter

Spring 2014

A Message from the President:

Hello friends and neighbours, and welcome to the start of the spring/summer season of 2014.

I feel like I've only recently come out of hibernation, having endured this long and cold winter. The spring took its time arriving, and once again it came with abnormal temperatures and flooding. Could this become the new normal of climate change?

The good news is that summer is sure to arrive, and the SLCA has a full agenda of events and activities for our members. We are looking forward to seeing you again, and sharing some good times.

There are a few noteworthy events this year, and we encourage you to take the time to attend the Annual General Meeting on Sunday August 3rd of that long weekend.

Directly impacting every member of our community is the upcoming Municipal Election in October 2014. Some of our members are still unaware of how significant our community is to these townships, and what challenges we face. A recent survey by the Hasting Economic Development Committee reported that less than 25% of respondents were satisfied with their local government, while 59% were unhappy with their property tax contribution. You can just complain about it, you need to speak up. It is very important that everyone vote by mail in October.

If you are unsure if you are registered to vote, you can visit <https://www.voterlookup.ca> for a quick and simple search. Make sure that all of the eligible voters for your property are registered, and contact MPAC before August if additions or corrections are required. The SLCA will do our best to provide coverage of the important issues and candidates. If you are interested in running for a position on council, you need to act before September.

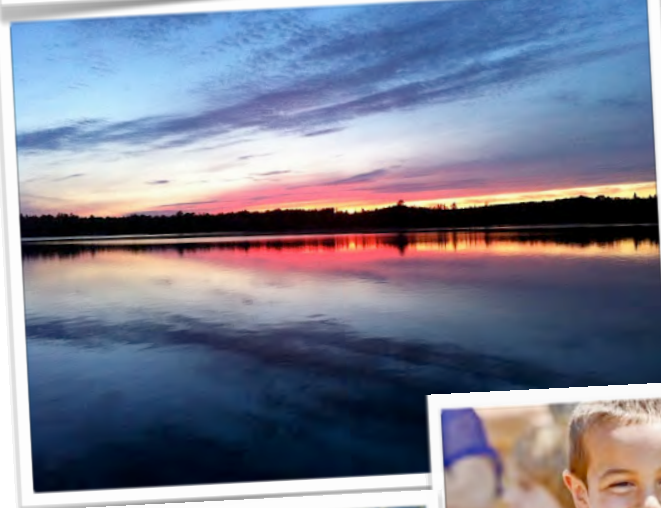
In closing, I would like to express a big thank you to all the members who have contributed their time and energy in support of this great community. Whether you've volunteered for an SLCA event or coordinated other services for our members, you are very much appreciated. We are sometimes reminded of the small number of individuals with property on our lake who are not members of the SLCA. And there are others who travel the South Road during the winter months without contributing to the special road fund that is administered by the Schad and Tanner families. To these individuals, we can only hope that you eventually become part of the community, and acknowledge the value of standing united with your neighbours.

Enjoy this newsletter, and have a great summer.

Anthony Genovese,
SLCA President



SUMMER 2013:





Glossy Buckthorn: Invasive Species

by Dave Langman

Common and glossy buckthorns' popularity for use as shrubs in hedges resulted in widespread planting across the country, and their invasion of a variety of natural areas. They have spread throughout our Steenburg watershed. Dense even-aged buckthorn stands will prevent natural regeneration of native trees and shrubs. Buckthorn root-exuded chemicals can harm other species and prevent them from growing nearby, which means that once established, natural areas can contain almost exclusively buckthorn.

Buckthorn is noted for prolific reproduction by seed. Under full sun conditions, it can produce seed a few years after establishment. Seedlings establish best in high light conditions, but can also germinate and grow in the shade. The seedlings have very rapid growth rates and resprout vigorously after cutting. Buckthorn seed germination is reduced under shading by mature shrubs; however, a carpet of germinating buckthorn seedlings usually appears after mature shrubs are removed.

Control Recommendations

There are a variety of different control measures for buckthorn, both physical and chemical, with contradictory results.

Pulling: When the soil is moist, small plants up to 0.5m (2 ft) in height can often be pulled as you take regular walks through your property – as buckthorn grows, it puts down a deep root system very quickly. Larger plants can be dug or pulled using a weed wrench. Caution should be taken, as pulling buckthorn often results in coppicing or sprouting and, unless other measures (such as herbicides or fire) are used, this can worsen the problem dramatically (i.e. population can quintuple in five years).

Cutting/Girdling: Cutting or girdling (a cut groove all of the way around the stem) are also control options. To be effective, cutting or girdling must be vigorous, leading to eventual mortality for most stems; however, mowing will also inhibit the development of other natural vegetation.

The buckthorn green leaves will provide easy recognition and allow for a thorough treatment, lessening the risk of affecting non-target species with a non-selective herbicide. Consider using a backpack, sprayer, or a small ATV mounted sprayer for larger areas.

Basal bark treatment can be used for smaller stems at any time of the year, but preferably during the growing season, with the herbicide painted or sprayed on the base of the trunk. Cutting stems of larger shrubs near ground level with a chain saw and treating them with herbicide successfully curbs sprouting. Herbicide must be applied to the stumps within 24 hours after cutting. Re-sprouts need to be cut and treated again, or sprayed by a hand sprayer directly on the foliage.

Photo Contest is

BACK!

Note - Only SLCA members will be able to participate

1 ONE picture per category

Deadline Oct 1st 2014

Photos to be emailed to PhotoContest@steenburglake.com with name of photographer, age, membership/cottage #, or mail to Box 326, Gilmour, ON K0L 1W0

Categories:- PHOTO BY KIDS 11& Under, Photo by tweens 12-15, ACTION, LANDSCAPES, NATURE, LIFE AT THE COTTAGE

The winners will be announced in the 2014 Fall newsletter.



North Hastings County Survey

North Hastings survey results can be found here!: <http://www.northhastings.com/images/profile/north-hastings-seasonal-residents-survey.pdf>



Invasive Species Report

by Dave Langman

Spiny and Fishhook Waterfleas

Bythotrephes longimanus & *Cercopagis pengoi*

Spiny and fishhook waterfleas are small aquatic predators native to Eurasia. The first report of spiny and fishhook waterfleas in North America were both in Lake Ontario – spiny waterflea in 1982 and fishhook waterflea in 1998. Both species were introduced to the Great Lakes in ballast water from ocean-going ships.

Both waterfleas are species of zooplankton – small animals that rely on water currents and wind to move long distances. Spiny and fishhook waterfleas prefer large, deep, clear lakes, but can also be found in shallower waters. Spiny waterfleas move to deeper, cooler waters during the day and swim towards the water surface at night to feed, while fishhook waterfleas stay near the surface. Both species are able to reproduce asexually, by cloning, and also sexually, and can multiply very quickly. When they reproduce sexually, the eggs can survive through the winter on lake bottoms and can be transported long distances on boats or equipment if they stay moist. The main diet of spiny and fishhook waterfleas is other zooplankton.

Range

The spiny waterflea has been found in all the Great Lakes and in more than 100 inland lakes in Ontario. The species has also been reported in Lake Winnipeg and the Winnipeg River in Manitoba. It is not known to be anywhere else in Canada, but has been found in inland lakes of American states that border the Great Lakes. The fishhook waterflea is established in lakes Ontario, Erie and Michigan, as well as some inland lakes in upstate New York.

Impacts of Spiny and Fishhook Waterfleas

Researchers believe that spiny waterfleas are the greatest threat to the biodiversity and structure of native zooplankton communities on the Canadian Shield since acid rain.



- Because their main diet is zooplankton, they reduce food supplies for small fish and the young of sport fish such as bass, walleye and yellow perch.
- A few animals can quickly multiply into a large population.
- They are easily spread between waterbodies on angling equipment and bait buckets and in live wells and bilge waters.

- Spiny waterflea introductions result in an average 30 to 40 per cent decline in native populations of zooplankton.
- Spiny and fishhook waterfleas can affect recreational angling and commercial fishing. Their tail spines catch on fishing equipment, making it difficult to reel in lines, and clogging commercial nets and trawl lines.

How to Identify Spiny and Fishhook Waterfleas

Spiny and fishhook waterfleas both have a single dark eye, four pair of legs and branched antennae that are used for swimming. You will need a microscope to identify key characteristics of each species.

Check the chart below to know if you have a spiny or fishhook waterflea.



Spiny Waterflea <i>(Bythotrephes longimanus)</i>	Fishhook Waterflea <i>(Cercopagis pengoi)</i>
Total length reaches one to 1.5 centimetres, with the tail spine making up about 60 per cent of the body length.	Total length reaches one centimetre, with the tail spine making up about 80 per cent of the body length.
Tail is straight or slightly angled with one to three barbs and a pointed end.	Tail is strongly angled, with one to three widely spaced barbs and a loop or hook at the end.
May have orange, blue and green colouring. Red stripe runs half the length of the tail.	Transparent.
Balloon-like egg pouch.	Pointed, elongated egg pouch.

What You Can Do

- Learn how to identify spiny and fishhook waterfleas and how to prevent accidentally spreading these invasive species.
- Inspect your boat, trailer and equipment after each use. Remove all plants, animals and mud before moving to a new waterbody.
- Drain water from your motor, live well, bilge and transom wells while on land.
- Rinse all recreational equipment with high pressure (>250 psi) or hot (50°C / 122°F) water OR let it dry in the sun for at least five days.
- If you've seen an invasive waterflea or other invasive species in the wild, please contact the toll-free Invading Species Hotline at [1-800-563-7711](tel:1-800-563-7711)



Crowe Valley Conservation Authority Update

Last fall, we reported on a proposal that the Board of the Crowe Valley Conservation Authority (CVCA) were considering that would have seen all operations transferred to the Quinte Conservation Authority (QCA) under contractual service agreement. A public meeting was held in Marmora on October 25th where extensive input was given both for, but mostly against, such a proposal. After hearing from all presenters, the Board then voted on a motion on whether to instruct the special subcommittee to continue with its discussion with the QCA and to come back to the Board with specific costs and details of such an agreement. In an open vote, all ten Board members voted on the motion which resulted in a tie, and thus the motion was defeated. Many of us in attendance were surprised by this arrogant do or die approach the Board took on this subject, but were relieved that at least it seemed like the Board would not be rushing into an ill advised and ill considered agreement that would most certainly have lead to the ultimate amalgamation of the CVCA with the much larger QCA.

Not satisfied with the outcome of the October vote, some directors of the CVCA Board raised a similar motion to the one already defeated in October, only this time, the motion was passed at the December meeting. It should be noted, that there were only six directors at this meeting, and that an open vote was not held or recorded. The same subcommittee who investigated this proposal was tasked to go back to the Quinte Conservation Authority to find out if the QCA would still be interested in entering into a service agreement, and if so, to work out the cost and terms of that agreement. The subcommittee was to report back to the board at its May meeting, but at that meeting, the CVCA's budget was finally passed as amended and the proposal to enter into a service agreement with the QCA was abandoned, hopefully for good!

On a more positive note, the same Board members also passed a motion authorizing the CVCA to continue negotiations with the Hastings Prince Edward Land Trust and the Township of Limerick to set up a trust fund for the McGeachie Conservation Area. We hope to be hearing more about this in the coming months and what it will mean in terms of this valuable asset on our lake. In the meantime, consider the following points about how our current municipalities operate:

- The townships seem unable to come together to resolve a problem, or make mutual improvements. We've seen this with our roads, and now again with our waterway conservation,
- Decisions appear to be pushed through by those who are loud and persistent, rather than through consultation, transparency and democratic process,
- Ratepayers are at a disadvantage, with limited information, and no confidence that elected officials are representing our best interests,
- On the issue of conservation, a decision to amalgamate would have been virtually irreversible. The financial impact of miscalculation would have been the burden of the ratepayers for many years, but the larger toll could have been felt by our children who will inherit this environment after our mismanagement.

Regardless of what your views are on the CVCA and other issues facing our townships, or whether you even have any, I would strongly urge you to get involved in the upcoming elections. Find out who the candidates will be in your municipality, and ask them what their positions are on this and other issues that matter to you. Let them know what your concerns are, and let them know you're watching!

Pat Stallaert – SLCA V.P.

Maynooth Madness

Aug 30th & 31st

This upcoming Labour Day Weekend Maynooth Madness will be hosting 2 days of over 25 events for young and old. The main event is the Highland Games on Saturday, as well as the Mudd Dawg taking place on Sunday. Other Saturday events include the biggest little Farmers' Market (50 vendors), Art Market, children's activities, parade, vintage automobile contest, and more. For a complete listing, visit www.maynooth.on.ca.





Foundations of Cottage Culture

By Dave Langman

I found a 2010 report on British Columbia cottaging by Greg Halseth and Julia Schwamborn of the Community Development Institute at the University of Northern British Columbia titled "The Foundations of Cottage Culture". The report was based on surveys collected from residents of Norman Lake near Prince George, BC. This article got me thinking about why someone would invest so much of their time and money into a building and property on a lake that is more than likely a long, perhaps stressful commute from home.

The Norman Lake, BC folks (no hydro access) gave the following main reasons for wanting a cottage: Relaxation, Family/friends, Peace/quiet/solitude, Wildlife/nature, and boating/water activities.

They also mentioned: Simple lifestyle, Good air quality, Biking, Cottage is our happy spot, Being outdoors, Good times/memories, and Campfires. Yup, seems that Norman Lakers are a lot like Steenburg Lakers.

What the Norman Lake Folks didn't like were: Noisy boats, Noisy neighbours, Noisy ATVs, and Barking dogs/pet issues. They mentioned: Difficult access in winter, Distance from permanent residence, Fuel prices, Taxes, Mosquitoes & Black Flies, Lack of privacy, Theft and break-ins, and Cottage needs work as other pet peeves. Sound familiar?

So Steenburg Lakers, how do you feel about your cottage? Is it the best place for what you like to do? Does no other place compare to this place? Is this place is very important to you? Would you be sad if you couldn't come here any longer? Can you be by yourself here? Does this place express who you are? Do you feel like you belong here? Would you be ready to make sacrifices to help protect this place? Maybe you have no particular feelings for this place. Perhaps you have sad memories related to this place. Maybe you get bored here?

Your association strives to improve your overall cottage experience through education and dissemination of information. This edition of the news letter includes an article on a noise reducing ATV muffler used by deer hunters that cuts noise pollution by 50%. There have been articles written about outboards that identify newer four stroke and DFI 2 stroke outboards as being significantly quieter and less polluting – some of our advertisers would love to hook you up with a new outboard or stern drive boat. If neighbours are noisy, get to know them and work out the issues. If the dog barks too much, get to know him/her too. Not enough privacy? Plant some native shrubs and coniferous trees on the property line. Hey folks, where there is a will, there is a way, eh! Have a good summer.

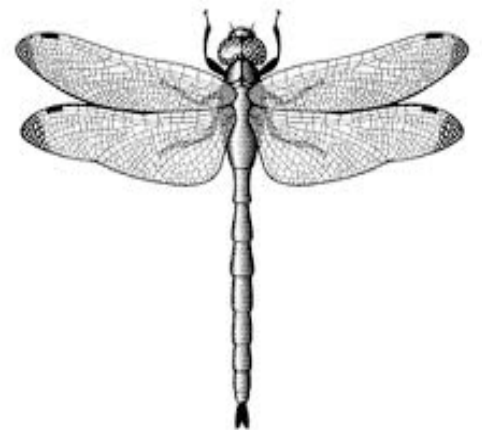
Dragon Ladies of Crystal Island

If any of you know Cathy Henderson or Judy Leahy over on Crystal Island (aka Bateman Island), you may know that they both share a passion for all things dragonfly. What you may not know is that this came to be purely from coincidence. Last year, Cottage Life Channel came to our beautiful Steenburg Lake to film a short documentary for a series they called Cottage Cheese. They not only interviewed Cathy and Judy, and their husbands Bob and Don, but also filmed hundreds of beautiful pieces in their collections of dragonfly ornaments.

If you get a chance, check out the show. The Cottage Life Channel schedule can be found on their website, www.cottagelife.com. The episode was called #11 - Kitschy, Crafty, Collectable. Don't let the online description fool you: It wasn't filmed in the Muskokas as stated, but right here on our very own Steenburg Lake.

It's great to know we have celebrities on the lake and to showcase our lovely little piece of heaven. Thank you ladies for sharing your story with us.

Pat Stallaert – SLCA V.P.



Cottage Life

New Cottage Life Series Looking For Collectors!

Do you have a home, outbuilding or property filled with antiques? Or did you inherit a collection of vintage items from family or a friend and are looking to purge or sell the items? Do you have a great story about a family heirloom?

A new series on Cottage Life is looking for antique and vintage collectors all over Southern Ontario. Whether you have a collection of antique furniture, sporting or fishing equipment, retro items, industrial equipment, or anything of the sort, they want to hear from you! The show will follow two antique expert hosts as they travel through the backroads of Ontario cottage country this summer. They are on the hunt to find hidden vintage treasures, hear the stories behind them and purchase pieces from you.

If you are interested in appearing on the show, please contact Lauren Hugh at lhugh@ourhouse-media.com or (416) 551-1032 x260



Crab Island Consternation Area

Last spring's ice melt resulted in high water levels, that combined with strong winds during the melt, resulted in a large chunk of ice shifting from the west bay towards the beach bay. The glacial sheet of ice ran full on to the west facing shore of Crab Island, creating a diminutive ice age like event. The net result was about a third of the island with vegetation (ancient cedars) was pushed into the lake.

An attempt was made to restore the island's shoreline to its former glory by land owner Dr. Dale Taylor, through back breaking labour in the hot sun, while fending off vicious moose flies and horse flies. He did manage to pick the island up and walk it back into place - no kidding folks! After the restoration work was completed, the admiring Dr. D started thinking about how best to use the Island.

Because of its open view to the entire sun's rays from dawn to dusk, the idea of a large solar farm crossed Dale's mind. A goat farm seemed like a good idea, or a wind farm. A Grow-op sounded pretty good too. Maybe a combo of all four land uses. Ultimately, Dale decided to proclaim the area as a privately funded and managed Consternation Area as a result of his feelings of anxiety, dismay, and the totally unexpected loss of his island's surface area and a complete lack of anticipation of the possibility of such an event taking place in his lifetime.

Think about it folks! How would you like to be the caretaker of an entire island that disappeared on your watch? A whole island! Possibly to be reduced to a rock pile! Talk about anxiety. Talk about dismay! Liber Gott! Helf mir!

Dr. Dale didn't just sit there and stew on the erosive effects of ice. He rebuilt his island! He proclaimed the island a Consternation Area! He put a stake in the sand (what's left of it) that identifies where lake ice can and cannot flow.

Future improvements to the Consternation Area are planned. A trail network, a thunder box, three Triple Breasted Bumpuncher nesting boxes, and a wayward home for Eastern Newts are already planned. This set of improvements will require the dedicated effort of local volunteers. Thus a call is going out to the membership for support as well as suggestions on how best to make use of the CICA. Send your suggestions to the SLCA website (Lake Talk) – a prize might be in order for the suggestion that brings the most smiles. **-Dave Langman**

Propane Prices Explode!

This past winter has seen shortages of propane accompanied by record increases in the price in many areas of Canada (Ontario, Quebec and the Maritimes). For those who only rely on the fuel to run a BBQ primarily in the summer months, these factors might have gone unnoticed, but for the thousands of families who rely on propane to heat their homes, this is a serious problem.

Many rural home owners (including members on our lake...) have switched to propane in recent years because it was an abundant and reasonably economical way to heat their homes/cottages and even power other appliances like water heaters, stoves, fireplaces, clothes dryers, and yes, barbeques. It quickly became a very appealing option.

Natural gas just isn't an option in most rural areas. Electric heating, although 100% efficient, is far too expensive, especially since the introduction of HST and Time-Of-Use in this province. Throw in the outrageous rates Hydro One charges its seasonal residential customers, and the economics are staggering. And then there are the many power outages that can sometimes last for days. Heating oil had long been an expensive option as the prices of petroleum products have become prohibitive in the past 20 years. Many home owners have switched from heating with wood because of the convenience and flexibility of propane. Not everyone has the luxury of having their own wood lot and wood requires you to stockpile your entire fuel inventory ahead of winter and be around to stoke the fireplace, stove or furnace.

So why the supply shortages and huge price increases? Well, most point to a very long and cold winter, not only here in Eastern Ontario, but in all eastern Canada and many parts of the north eastern US.

Part of the problem might also be that propane, at least to date, has become a victim of its own success in that the demand grew much faster than the supply and infrastructure could accommodate, at least when the system gets taxed the way it did this past winter.

It wasn't that long ago, that propane was almost considered an undesirable by-product of natural gas (methane being the largest and most sought after product). Now natural gas producers have to specifically seek out gas fields that are considered "wetter" (higher in propane and butane, and hence easily compressed into liquid fractions) in order to meet demands.

Another problem analysts point to, is that Canadian suppliers may have sold too much to American customers this past winter, and to corn farmers in particular, looking to dry their crops after a particularly wet season in the US. You see, propane has become a very attractive fuel not only for residential but commercial and agricultural markets as well, and critics argue that the industry has not kept up with the rapid growth in demand. Some say that propane producers did not want to create a glut for their product which could have forced the prices lower and possibly exacerbated the problems we now face.

The Ontario Propane Association is quick to say that there is no shortage of propane, only some temporary distribution problems coupled with abnormally high demands. All of this points to what is a largely unregulated industry in this province: One that has left provincial and federal politicians pointing the finger at each other. The federal Minister of Natural Resources, Joe Oliver, announced that both the National Energy Board and the Competition Bureau will be investigating the shortages and almost doubling of propane prices. But just as we've seen similar announcements in the past regarding allegations of price fixing in

the gasoline market, one shouldn't expect too much to come from all of this.

Proponents of the industry argue that more government regulation usually increases prices and does little to affect supplies. And if governments really wanted to provide consumers some relief, they could consider removing or reducing taxes now charged on this fuel.

Though some suppliers do offer fixed-price contracts, the price is usually higher than the current market price for propane, and these contracts do nothing to ensure supplies when shortages occur. Also, since most local suppliers also own and lease out the storage tanks, shopping around for the best price and availability is not usually an option.

The best advice, as with any fuel source, is to increase the energy efficiency of your home/cottage by insulating, draft-proofing, and keeping your equipment in top operating condition. Having an alternate or back-up heat source is always a prudent approach. And lastly, as with any combustible heating fuel, make sure you have functioning smoke and carbon monoxide detectors throughout your home and cottage.

Pat Stallaert – SLCA V.P.



PROPANE



North Hastings Community Fish Hatchery

by Dave Langman

North Hastings Community Fish Hatchery (NHCFH) is a community, volunteer-based, not-for-profit organization with federal charitable status that is raising "local fish for local lakes". They raise local species of Lake Trout.

Lake Trout are indigenous to Steenburg Lake. George Hill recounts the story he heard from Ralph Brooks of Brooks Island (Big Bob Island) fame that there used to be so many Lake Trout in Steenburg Lake that the pioneers would net them out and use them for fertilizer. Those of you who have fish finders might see a big fish lurking at just off the bottom of the deep hole (72' deep) on the Fish Finder screen in summer. This fish could well be one of the last remaining Lake Trout in our lake.

I think it would be a great thing for our community to support the local fish hatchery in Bancroft. Your time and/or contributions would support the good work of the volunteers at the hatchery and help sustain Lake Trout in our area. Continued support and involvement may even result in the possibility of restocking Steenburg with Lake Trout.

The following information is taken from the NHCFH website:

- In 2007, the building and equipment were put in place. Volunteers raise local species of Lake Trout that are distributed in the Bancroft area. Fingerlings have been placed close to Steenburg Lake - Mayo and Robinson Lakes.
- The hatchery is a modern facility using current technology to minimize the impact to the environment. It is serviced by four drilled wells located either in the "hatchery field" or in adjacent fields to the hatchery. This cold, pure well water is re-circulated through a series of filters and processes and used many times over.

- The hatchery contains 5 large raceway tanks 22 ft. long by 5 ft. wide and round tanks called combi tanks. The combi tank is a 3 in one tank with the upper level for eggs, the middle level for first feeding and early rearing fry, with the third level for fry development. It is estimated that 25,000 grams of fish can be contained in a bottom tank.
- An extensive filtering system and "sewage" system is a major component of the hatchery with water processed so that only filtered water is discharged to the environment through constructed limestone stream. Sludge from the water processing is directed from the filter to a 2500 gallon holding tank. This tank will be pumped as required and sludge can be disposed of on selected fields on the Hypoint Farm or can be trucked to the Municipal wastewater treatment plant or disposed of by a licensed pumper.
- Hydro to the hatchery is single-phase power and is backed up by a 35 kilowatt automatic start propane generator. The generator self test once a month as programmed and in the event of a power failure will start within 30-60 seconds.
- Lighting in the hatchery over the tanks contains special bulbs with mirrored bottoms to ensure most light is reflected up rather than down and creating shadows that unnecessarily excites the fish. These lights are on dimmers and lights should be dimmed except when they are necessary for cleaning tanks or other procedures that would require brighter lights. The dimming of the lights is to simulate the dusk and dawn period when trout are more active.

Tours are available by phoning ahead [613-332-4084](tel:613-332-4084) or [613-332-8100](tel:613-332-8100) prior to coming so we can have someone available to give you a tour. Memberships are greatly appreciated as well. Check out thie NHCFH at <http://www.fishhatchery.ca/>

Julius G. Bognar



BOGNAR

TREE SERVICES

DANGEROUS TREE REMOVAL

TOPPING AND FALLING

TRIMMING (Trees and Shrubs)

CHIPPING

Office: 1-613-473-1818

Cell: 1-613-849-1415



Opportunity Knocks!

- Dave Golem

Adjacent to Steenburg Lake is the jewel called McGeachie Conservation Area. It consists of about 500 acres of meandering streams, beaver ponds, vernal pools, dark and spooky evergreen swamps, rocky hilltops, and sprawling hardwood forest. During the past five years about 8 kilometres of marked hiking trails have been carved throughout this natural habitat, where you can see birds, animals and unusual forest plants wherever you go. Getting away to nature at the cottage now has another unique opportunity for all residents to explore.

McGeachie Conservation Area was donated to Crowe Valley Conservation Authority in 1996 by owners Jack and Ethel in an effort to preserve this wonderful landscape in perpetuity. However, it is uncertain times for Conservation Authorities in Ontario, resulting in part from diminishing funding from the Province. This is especially true in the case of Crowe Valley, whose Board of Directors have been exploring possibilities in order to reduce the levy against local Municipalities. This means that the long term prospects for McGeachie could possibly be sale to private interests. Such an outcome would be lamentable.

A recent meeting including Crowe Valley, the Hastings and Prince Edward County Land Trust, and myself, presents a possible solution to the potential loss of this natural resource on our lake. The Land Trust is a charitable organization created by volunteers with the objective of "preserving the diverse natural and cultural heritage features of Hastings and Prince Edward Counties." Crowe valley has given its consent in principle for this effort to proceed.

The Land Trust is experienced in dealing with individual local needs, and in administering properties for the benefit of the area. They are very flexible in the way they can arrange their activities, and being a registered charity, they can deliver tax benefits to anyone who may wish to participate.

Naturally, it takes money to look after a heritage site such as McGeachie, but the good news is that relatively few dollars are needed in order to start this process. On an operational basis, McGeachie nearly pays its own way, however, in the longer term, maintenance of the infrastructure, especially the 150 year old Drinkwater Cabin, will require some significant funds to keep it attractive to those who wish to rent the property. The long term obligations can be covered easily if families from the community are willing to make donations or bequests from their estates. We believe that some of the residents who have family ties to the McGeachie clan will be especially interested in making future commitments which will help this cause, but others who appreciate the natural beauty of this resource will probably also want to participate.

We are open to any suggestions about how to make this effort attractive to contributors, such as the purchase of memorial markers for

the trails, plaques for picnic benches and/or areas, family names attached to specific trails, and so on.

To get this started it will be necessary to raise some cash to assist in the initial costs of setting up the Trust arrangement, and to pay incidental costs to promote the arrangement. Toward this goal we would like to raise ten thousand dollars to make this attractive to the Land Trust to move ahead. We hope that people will chip in to make this happen. All donations will qualify for a tax receipt.

OPEN DAILY
Victoria Day through Dec 31.
(Weekends in Winter.)

THE OLD HASTINGS MERCANTILE & GALLERY

Hastings County Tourism 'Business of the Year'
613 337-5050

Visit historic 'downtown' Ormsby (Pop. 20), at the corner of Hwy 620 & The Old Hastings Road.

'TREATS & TREASURES'
Step back in time when you enter our 1890s general store. Discover room after room filled with fine Canadian arts & crafts, vintage toys, antiques, nostalgia books, cottage-themed gifts and clothing, country-themed merchandise... and penny candy!

Lillian & Gary in The Mercantile Room.

Check out our **Steenburg Lake** clocks, mugs, coasters, 3D map art, clothing, hats, puzzles, aprons, post cards and more!

And while in Ormsby, plan a visit to...
The Old Ormsby Schoolhouse
"Educated Dining" & Tea Room
Phone 613 337-5067 for restaurant hours, information and reservations.

14" Steenburg Lake Clock

www.oldhastingsgallery.ca

Memories of Steenburg Lake

by Richard T. McCarthy

CHAPTER 7 - The Snow Road

Our family has owned the Maple Landing area for quite a number of years, and people have told me stories of how things developed in this area many years ago. I can't remember who told me, or whether I have the facts straight or not, but I'll tell you in my stories what I remember having been told. It's certainly fun to imagine things that happened.

Someone referred to the Maple Landing Road as the Snow Road many years ago, and when I asked why it was called the "Snow Road", it was because a man by the name of Colonel Snow was the man who surveyed the road. It was apparently a main road travelled between Madoc and Bancroft, prior to any highways such as Hwy. 62 having been built. The big old house that was at the N.W. corner of the lake (the old Fitzgibbon house, now dismantled except for the piers) was the coach house, where the horses were changed on the trips from Belleville north to Bancroft. I always found it fascinating to imagine, when sitting in the trees beside the road, a horse drawn stage coach coming into view along the road, and to see it head on to the Fitzgibbon house at the end of the lake to have a break on its long trip to Bancroft.

When heading east from Bancroft, you will notice another road called "Snow Road". I wonder if the colonel was responsible for that one too.

CHAPTER 8 - A true recycler

For those of us who have been on the lake for years, they will remember the two Fitzgibbon brothers, Curtis (Curt) and Bruce Fitzgibbon. If anything mechanical had to be repaired, Curtis, who lived in the big house with his wife Jesse and family, was the man to see.



Anything carpentry, Bruce, who lived in his shed/barn north of the house, was your man. Bruce's building had his living quarters built into the back of it. He had no electricity or running water, and all of his carpentry tools were manual tools and in incredibly good order. Bruce was a very neat and organized person who was a joy to know, for any of us who were lucky enough to know him.

Bruce made the greatest square nosed wooden boats that cottagers, especially the islanders, appreciated owning. One day as a teenager I dropped by Bruce's barn to see him, and found him working on a boat he had up on sawhorses. He was going to be replacing a wooden boat for a customer, and he was busy removing, with his hand screwdriver, all of the brass screws from the old boat so that he could use them in the new boat to be built. A true recycler! We were lucky enough to have owned one of Bruce's boats.

CHAPTER 9 - The best pies - EVER!

About the same time, Dad went over to see Curtis and Jesse Fitzgibbon in the big old house, probably because he needed something mechanical repaired. I had tagged along, probably with my older

brother John as well, just to have an outing with Dad. It was a beautiful sunny somewhat cool Saturday morning as I recall. Curtis, Jesse and their family were sitting around the big table in their large warm kitchen having breakfast. I remember seeing Curtis putting butter on hot pancakes, and had never seen that done before. What a sheltered life I'd led! I've always had butter on my pancakes ever since.

The big Finley Oval wood stove was cranking out the heat in the kitchen, and I was surprised to see Jesse get up from the table and go over to the stove, open the oven door, and stick her elbow into the oven. Jesse let me know that she could tell that the oven was the correct heat for her pies by the sensation of the heat on the inside sensitive skin of her arm. Jesse made the most wonderful pies, and would bake them to order for people on the lake.

The photo above is a picture of my wife Marilyn McCarthy in 1973 in one of Bruce's boats at the dock of my parents' cottage Mal and Helen McCarthy where the Pollards now reside.

Bancroft Eatery & Brew Pub Presents...
BANCROFT WHEELS, WATER & WINGS WEEKEND
July 4 - 6, 2014

Vintage Car Show - Midway - Freddy Vette & The Flames - Fly-in Pancake Breakfast
 Horn Dawgs Ribber - Live Music - Mega Street Sale - Family Water Events ...and more!
 Full Schedule on beautifulbancroft.ca - Visit Bancroft Wheels, Water & Wings on Facebook

Bancroft **BANCROFT CRUISERS** **McCaskie Sand & Gravel** **Korn Dancers** **McDougall** **RE/MAX**
OLD TIN SHED **Bancroft & District CHAMBER OF COMMERCE VISITOR INFORMATION CENTRE** **Kawartha CREDIT UNION**

SLCA Executive

ANTHONY GENOVESE
 PRESIDENT
 613-474-1154
President@steenburglake.com

RICK BURKE
 VICE PRESIDENT
PAT STALLAERT
 VICE PRESIDENT
vicepresident@steenburglake.com

JUDY PLATT
 SECRETARY
 613-474-1895
Secretary@steenburglake.com

DAVE MCDONALD
 TREASURER
 613-474-2946
Treasurer@steenburglake.com

MARLENE POLLARD
 MEMBERSHIP
 613-474-2392
Membership@steenburglake.com

DONNA COCHRANE
 SOCIAL
 613-474-3167
Social@steenburglake.com

DAVE LANGMAN
 LAKE STEWARD
 613-474-1169
LakeStewardship@steenburglake.com

DAVE GOLEM
 MUNICIPAL AFFAIRS
 613-474-0803
MunicipalAffairs@steenburglake.com

ERIKA LANGMAN
 NEWSLETTER
 613-474-1169
Newsletter@steenburglake.com

DEAN BUTLER
 LAKE MERCHANDISE
 613-474-0268
merchandise@steenburglake.com

Ontario Tree Care
Tree Removal & Clean Up
Pruning & Shaping

Eric Huygens
613-334-4141
tree-climber@hotmail.com

Fully Insured



The Splake are Back!

This past spring the MNR stocked the lake with 7500 splake. It was an exciting afternoon with many local cottagers around to watch the Ministry at work!



A Gift of Time Away with Family. Celebrating Cancer Recovery. Presented by CottageCountry.Com COTTAGE, CABIN & CHALET RENTALS

Financial Report as of April 2014

We finished 2012-2013 with a profit of \$1,552, a decrease of \$1,139 from the previous year. This was primarily due to timing, as there were delays in collecting some membership fees, and also some receipts from merchandise sales were not deposited until after the end of the fiscal year.

So far this year we are showing a loss of \$115. This is due to the timing of revenue vs. the expenses that we have incurred. Many of the expenses have already been paid for the year, while most of our revenue will not come in until the summer months.

In all likelihood we should end up in a profit position towards the end of the summer; it should be correspondingly higher due to the delays on 2012-2013 receipts referred to above.

Assets:	YTD 8 Mos.	2013	INCOME:	YTD 8 Mos.	2012
Bank Account	2,675	5,960	Membership Fees	1,190	4,300
PayPal	151	301	Advertising Income	50	1,275
GIC - 2.5 Yr 2.45% Nov 29 2013	0	13,959	Fundraising Income, Maps	0	20
GIC - 2.5 Yr 1.80% Mar 15 2014	0	5,253	Fundraising Income, Merchandise	950	1,940
GIC - 2.5 Yr 2.05% Apr 9 2015	3,216	3,168	Fundraising Income, Fun Run	0	350
GIC - 2.5 Yr 2.00% May 7 2015	2,576	2,538	Interest Income	381	526
GIC -1 Yr 0.50% October 16, 2014 (Cashable)	4,009	0	Total Income	2,571	8,411
GIC - 5 Yr 2.30% Laddered Dec 3 2018	7,103	0			
GIC - 5 Yr 0.75% December 3, 2018 Cdn Equity	7,067	0			
GIC - 5 Yr 2.30% Laddered Mar 15 2019	5,325	0			
Investment Cash	1	0	EXPENSES:		
Prepaid Insurance Sep/13-May/14	0	1,062	Fundraising Costs, Merchandise	149	1,738
Inventory T-Shirts/Hoodies	1,046	1,046	Fundraising Costs, Fun Run	0	647
	<u>33,172</u>	<u>33,287</u>	AGM, Regatta, Movie Night	0	361
			FOCA Dues & Expenses	687	596
			Insurance	1,062	1,423
Reserve for Future Expenditures	20,000	20,000	Newsletter Expenses	691	1,126
General Fund, Unrestricted	13,287	11,736	Members Handout	28	149
			Bank, Paypal & Admin Charges	67	82
Net Assets, Beginning of Year	33,287	31,736	Rock Markers, Fishing Derby	0	291
Excess (Loss), Current Year	-115	1,552	Sign Maintenance	0	5
Net Assets, End of Year	<u>33,172</u>	<u>33,287</u>	Donations/Gifts/Memberships	0	150
			Web/Webcams	0	99
			Water Testing	0	191
			Total Expenses	2,686	6,859
			Excess (Deficit for Period)	-115	1,552

Thinking of Buying or Selling?

RE/MAX[®]
Country Classics
Ltd. Brokerage

Call
Bonnie McLean-Dyas

1-877-670-SOLD (7653) or 613-318-9729

**"Click or Call
I Do it All"**



Broker, ABR

www.bancroftrealestate.net bonniemc@nexicom.net

Steenburg Lake Bird Watch : Triple Breasted BumPuncher

Brown Creeper (American
Trecreeper) *Certhia americana*

Aptly named, the brown creeper is indeed brown and agilely creeps up trees as it forages. Relatively common and widespread through much of North America, this unique bird is easily overlooked because of its superb camouflage.



This bird eats: insects, seeds, and nuts. Brown Creepers prefer mature coniferous or mixed coniferous and deciduous forests, particularly with pine, spruce and fir trees. The Brown Creeper's song is a high, thin, whistling warble with a varied tempo and pitch. The typical call is a sharp "reeeeep" that may be made singly or could be repeated several times in an even sequence.

While foraging, brown creepers work their way up trees in a spiral pattern using their stiff tails for balance, similar to woodpeckers but without sideways or downwards movements. When threatened, they use their camouflaged plumage to great effect by spreading their wings and flattening against the tree to blend in to its bark. While roosting, they will typically hang on a tree's trunk or alongside a large branch.

Brown creepers are monogamous birds that may nest in cavities or, more frequently, under a loose flap of bark on a dead or dying tree. After mating, the female bird will incubate a brood of 2-8 eggs for 13-17 days. Both parents continue to care for the young for 12-16 days after hatching. Only one brood is raised per year.

These small songbirds will visit backyards where mature trees are present. They may occasionally visit feeders offering nuts, suet and peanut butter, especially if the feeders are placed near appropriate trees. Backyard birders hoping to attract brown creepers can also smear suet or peanut butter directly on trees.

Veery

The Veery lives in moist deciduous woodlands. It is a secretive bird, and lives in dense shade. The beautiful song of the Veery sounds best at dusk, as it echoes across the

lake, usually from the Headland. The bird is difficult to see, but it can be lured into view by an imitation of the squeaking of a bird in distress. Its diet is evenly divided between insects obtained on the ground and fruit. It migrates at night, the flock keeping together in dark skies by means of a "contact call" characteristic of the species. Experiments on other thrushes show that their vision in shade or twilight is better than that of most other birds. It lays 4 blue-green eggs in a bulky cup of moss, plant fibers, and leaves, placed on the ground in a clump of grass or ferns or a few feet off the ground in a shrub.



American Redstart

A lively warbler that hops among tree branches in search of insects, the male American Redstart is coal-black with vivid orange patches on the sides, wings, and tail. True to its Halloween-themed color scheme, the Redstart seems to startle its prey out of the foliage by flashing its strikingly patterned tail and wing feathers. Females and immature males have more subdued yellow "flash patterns"

on a gray background. American Redstarts breed in open wooded habitats,



particularly those dominated by deciduous trees.

Triple Breasted BumPuncher

Relatively rare to this neck of the woods, the "Triple" is best observed in July. This bird has an affinity for fruit festooned "foo foo" drinks that are left unattended by late afternoon skinny dippers. The

bumpuncher gets its name through a symbiotic relationship with fainting goats. After imbibing upon the aforementioned unattended: Singapore slings, sunrises, and mojitos, the Triple can develop quite the naughty behavior. The colourful

creature dives from high in the white pine trees towards unsuspecting goats, startling them with a piercing call that sounds a bit like "Eyel-half-a-nuder", and thus causing the poor little goats to "faint" in surprise. - Dave Langman



An Ode to the Old Lady in the Woods.

While out for a walk in the woods one day
A glint of chrome shone brightly my way.
She was there all alone by the trees in the woods
There wasn't much left, just a trace of her hood
But she still caught my eye with that glimmer of chrome.

That rusty old lady had at least found a home.

As I pushed back the leaves that had fallen this fall
Her beauty was there, had I answered her call?
But how did she get there was anyone's guess?
It would turn out to be an impossible quest.

I looked at her closely, she was older than me
I could tell that quite easily, by the size of the tree
That had grown up beside her and pressed into her side.

Like a girl on her honeymoon out for a ride

With the love of her life, to be close and feel wanted
But this poor old lady whose life had been flaunted
Was left all alone with no one to feel
The power she had and hear the tires squeal.

She was a gal from the sixties, there's no use denying
As I left her alone, I felt just like crying
For this rusty old gal that ended up in the trees
With no one around but the birds and the bees.

Her end was befitting; it wasn't a crash!
She was lucky you see, she had a steering wheel and dash.
With an engine not running and tires still there
The rest of her body was in disrepair.

She accepted her fate and awaited her end
Amongst the trees in the forest with no one to tend
To her chrome and her body that were falling apart
But the beauty's still there, and so is her heart.

Bruce Pinkerton.
Steenburg Lake
October 2013



Chupacabra

If you have noticed, there have not been many goat sightings in the past couple of years on the roads and environs around Steenburg Lake. This might be because of a recently reported species called the Chupacabra, which has gathered quite a following in the internet.

Chupacabra, AKA Goatsucker, is said to feed upon the blood of mammals, particularly goats. It is reported to be somewhat like a hairless, long tailed, long rear legged dog with a large snout and huge fangs.

This mythical creature, I can safely say is not real - it is purely the imagination of a Puerto Rican woman what watched the movie Species once or twice two often.

But wait, there is more here! There actually are Goatsuckers among us. Goat Suckers do hide in our deciduous forests, especially those that have open lower canopies like the Headland. They are very hard to spot, they even fly and have a sharp dragon like wide mouth. They call out at night. They have glowing red eyes

when you shine a flashlight at them. All true. No kidding folks. Goatsuckers are among us!

Two often spotted Goatsuckers in Ontario include the Whip-poor-will and Common Night hawk. The name Goatsucker is based on an ancient belief that these creatures fed on goat's milk by night, but their presence near such animals was no doubt due to the insects hovering about them. With their long, pointed wings, weak feet, and small, wide gaping bills fringed with bristles, goat suckers have been called flying insect traps. Protected by brown, gray, and black coloring, and their lax and fluffy feathers render their flight almost noiseless.

Unlike other birds it hibernates during the winter instead of migrating. Its body temperature drops from 102 Fahrenheit to 26.5 Fahrenheit, its breathing slows, and its digestion ceases until the return of spring, which brings the insects that constitutes its diet.

Made you look, eh!



Red Church Gallery

2191 Hwy 620, Coe Hill

(30 minutes south of Bancroft)

Featuring original paintings;
photography; sculptures;
hand-made jewelry and more

Open May long weekend through to Thanksgiving
Saturday 10:00am - 4:00pm Sunday 11:00am - 3:00pm

Fridays in June, July & August 11:00am - 3:00pm

Redchurchgallery.com

Call Us! We can answer your questions!



**SMARTER
BOLDER
FASTER**

ALL SEASONS REALTY LTD., BROKERAGE

The Local Experts™

Each office Independently Owned and Operated

1 Fairway Blvd., Unit 5, Bancroft, ON K0L 1C0
(beside Canadian Tire Gas Bar)

Phone: **613.332.5500**
Toll Free: **1.800.351.0021**
Fax: 613.332.3737



Emma Kearns

BROKER OF RECORD
Cell: 613.332.9080
emma@bancroftwaterfront.com



Ray Krupa

BROKER/CO-OWNER
Cell: 613.332.8801
info@raykrupa.com

www.bancroftwaterfront.com

*Keep ahead of the market...
If you want Sold or Active listings for your lake,
please don't hesitate to email or call us.*

Team Power Dynamics Working for YOU!

*Make your next move with Century 21 All Seasons Realty
Experience worry-free service*

SERIOUS ABOUT SERVICE



Phone: 613-474-1122
Cell: 613-332-8392
eden@scicanada.net

Dwayne Nicholson

2593 North Steenburg Lk Rd, Coe Hill, ON K0L 1P0

*Trucking, Bulldozing, Backhoe
Fill, Topsoil, Gravel, Playground Sand
Road Building and Maintenance
Septic System Installation
Dumpster Service
Snow Plowing*

MEMBERSHIP REPORT

SPRING 2014

Well here it is spring again and looking forward to summer at Steenburg Lake. I am happy to report that we have all the canvassing areas covered this year thanks to three members stepping up to the plate. Thank you to Wendy Rudd, Carolyn Dobson and John Harnett.

If there are any new 50 years members coming up please let me know and we will recognize them at the AGM this summer.

I have some sad news this spring. During the past year and half we have lost a few of our members. Back in December 2012 we lost a 50 years member, Joe Cooper. In 2013 we lost Vivian Prowse who was also a 50 year member and Jim Climpson. This winter we lost Jack (O'bie) O'Brien who had been a member for 45 years, Wes Moffatt a member for 40 years and John Savage who just became a 50 years member last year. If I have missed anyone else please accept my apologies and let me know. For the future could you please let me know of other members so I can update.

I would like to remind everyone that we do have the PAY PAL service on our website www.steenburglake.com. Many members have used this service and find it handy. If you choose to pay this way, your area canvasser will still drop off your info kit.

Hope to see you all at our summer events. If you have any questions please contact me at 613-474-2392 or pollard25@steenburglake.com

Marlene Pollard
Membership Chair SLCA



BUTLER
MARKETING SERVICES

Your Promotional Product Specialist!

1-905-683-3456



Social Corner

by Donna Cochrane

Before we get into the summer events, I would like to say thanks to everyone who braved all the snow and cold for the great time we had for the fishing derby on family weekend, Feb. 18th., it was a perfect day.

This year we changed it up a bit, & added a fish dart board, and ice putting. I added up the names on the sheets for these events and was happy to see 120 people played each of these games. This count is up by about 45 from last year. People also laced up and did some skating on the rink. For those who fished, again it was not a good turn out by the fish. Only perch were caught.

I have to mention the support we received from some wonderful business in Bancroft and surrounding areas for our great prizes and too some of the families on the lake who also donated. THANK YOU!

Hot dogs & French fries were provide for everyone. Thanks to everyone who helped make this day so much fun.



Opener 2014?

ATV Exhaust Silencer

ATV's produce a loud, low frequency "thumpy" exhaust note that can be very annoying and disruptive to your neighbours. Some ATV riders "tune up" their machines by adding specialized exhausts intended to improve performance. These alternative, and more neighbour friendly exhaust systems are designed to reduce exhaust noise by up to 60%. There are a few Youtube videos that compare before and after - check this one if you are interested in hearing the difference. <http://www.youtube.com/watch?v=XqsT1mKR4GI>

Royal Distributing offers such an exhaust (Stealth Exhaust System 2.0 by Kolpin) for \$170.

Flowmaster inc. offers the Hushpower ATV Silencer and claims a 10 dB sound pressure drop (about 60%).

Silent Rider offers a bolt on aluminized 14 gage steel exhaust silencer that the company claims will reduce exhaust noise by 60%. Exhausts are designed for most machines, and are quick and easy to install. The website identifies a price of \$172, so expect the cost to be around \$250 with shipping, and duty for a self installation.

Thanks for your consideration of this environmentally friendly product. - Dave Langman

613-337-5269

COSBY'S
SMALL ENGINES

**Sales and Service to all
Makes and Models of:
Lawn and Garden, ATVs,
Saws and Generators**

PORTABLE & STANDBY GENERATORS



**FACTORY TRAINED
WARRANTY REPAIR CENTRE**

613-337-5269

Fax: 613-337-5384

cosbysmallengines@gmail.com

961 Hwy. 620, Coe Hill, ON



**Unique Wood Furniture and
Other Specialty Items**

www.tinhousewoodworking.com

2358 Hwy. 620, Coe Hill, ON.

Like us on Facebook



Tinhouse Woodworking Showroom

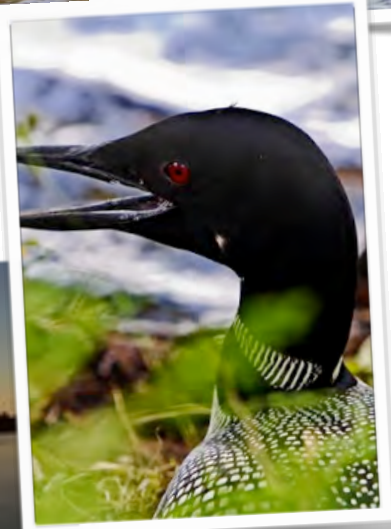
Locally made, lovingly created, using reclaimed and locally harvested wood

Showroom Open 10-5 Wed-Sun including holiday Mondays - Victoria Day until Thanksgiving

Workshop in operation all year—**Now Accepting Custom Orders**—

Contact us: info@tinhousewoodworking.com or call 613-334-9466

SUMMER 2013:



Social Corner Summer Events

June

28 Fireworks

at 8:30pm, Mike and Donna Cochrane will be hosting a Firework Celebration for Canada Day. They have requested that families in attendance contribute \$25.00 towards costs. They will also be serving french fries.

People can come by boat (location of old marina), or you may drive to 1035 Steenburg Lake North Road to enjoy the show from the beach (lots of room, so feel free to bring lawn chairs)
Plan to arrive before 9:00pm for the start of the fireworks, or even earlier to get a good spot and some snacks.
Rain date will be the Sunday, June 29th.
You can contact the Cochrane's at 613-474-3167, or by email at cochrane46@steenburglake.com

A big thank you to the Mike and Donna Cochrane and friends for putting on a great winter Family Day event at the lake. Who says Vancouver has it all - we were golfing, fishing, sledding, and skiing on the same day. Love the ball park dogs and the fries! Your efforts were very much appreciated. - Chris Langman

Steenburg Lake Fun Run T-Shirt Form

Please complete the entry form below and drop it off **WITH PAYMENT** to Wendy Butler, @613-474-0268 or wendy@butlermarketing.com by **August 5th**. Or sign up online and bring payment the day of the event. **DEADLINE TO GUARANTEE YOU GET A T-SHIRT IS AUGUST 3RD**. **SO DON'T DELAY, SIGN UP ONLINE TODAY!!!**

Tshirt Sizes: Youth Small, Medium and Large
Adult: Small, Medium, Large, Xlarge, XXLarge

Male or Female: _____
Name: _____
Age: _____
Size: _____

July

12 Regatta & Barbecue

11am @ The Beach
Come and meet your neighbours at the Regatta! Refreshments will be provided, donations welcome.

Bring your own KAYAKS, CANOES, PADDLES, AND LIFEJACKETS.
Medals will awarded for 1st, 2nd and 3rd place finishers.

13 Road Clean Up

9-11AM
North Road - Meet at the Beach
South Road - Meet at the first Y in the road

Steenburg Lake is your lake. Please take pride and ownership in our lake by helping keep the roads and beach free of garbage. Please bring garbage bags and dispose of the garbage at the dump in your area.

Aug

9 Steenburg Lake Fun Run

Registration 9:30 am – check off your name and get your race number
Race Starts - 10 am
Distance - 5km for runners and walkers...(or walk until you've had enough)
Where: Start/Finish is at the South Steenburg Lake Road & Highway 62
Fee: \$5 per person includes t-shirt&snack
Prizes: Medals will be awarded to both males and females who finish 1st, 2nd and 3rd in their age categories. Call Wendy @ 613-474-0268(Cottage)

3 Annual General Meeting

Coffee: 9:30 am Meeting: 10:00 am
Based on member feedback it was decided that the SCLA will be hosting a continental breakfast at 9:30am prior to the meeting. We will not be having a BBQ, but members are invited to hang around for coffee and conversations following the meeting,

